



BUSINESS SCHOOL

MASTER IN MANAGEMENT

2016 - 2017



affiliated to



EUROPEAN IDENTITY
GLOBAL PERSPECTIVE

The World's First Business School (est. 1819)

KEY FIGURES

6 ESCP Europe campuses in Berlin, London, Madrid, Paris, Turin and Warsaw

The World's First Business School (est. 1819)

100 academic alliances worldwide

Triple accredited: AACSB, AMBA, EQUIS

4,000 students in degree programmes representing 90 different nationalities

5,000 high-level participants in customised training programmes and executive education

Over **130** research-active professors representing over 20 nationalities

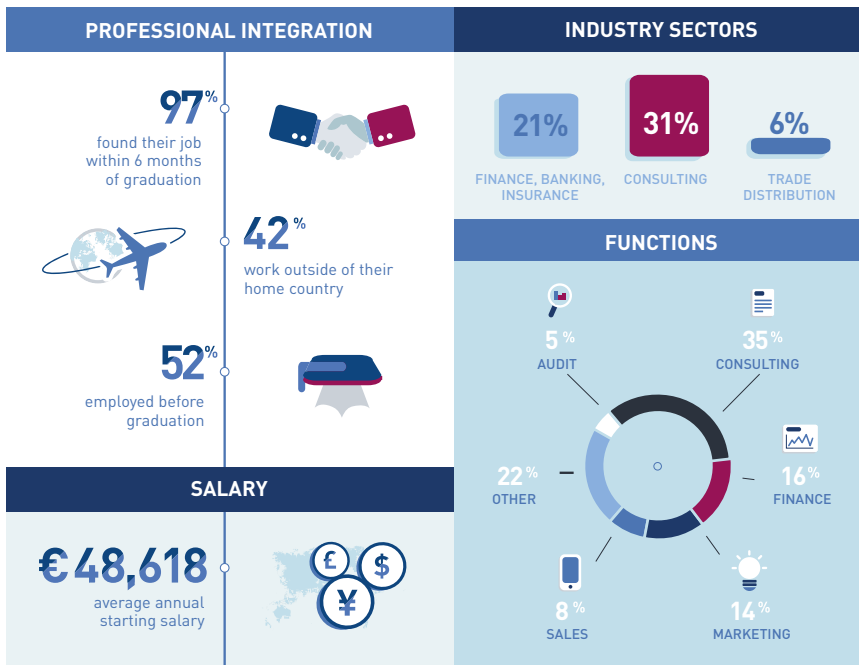
120 affiliate and visiting professors, and more than **700** practitioners and experts

45,000 active alumni in more than 150 countries worldwide

MASTER IN MANAGEMENT KEY FACTS

- Ranked 1st in the 2015 Financial Times Master in Management rankings in Germany, Spain, Italy and Poland; 2nd in the UK and 3rd in France
- A two-year intercultural general management programme
- Over 25 specialisations in Finance, Marketing, Sustainable Development - and many more
- Studies to be carried out on at least 2 ESCP Europe Campuses, with the possibility to study in a third location
- 10 months of internships in at least 2 different countries
- The possibility to obtain national degrees in each of ESCP Europe's home countries
- Over 25 dual degrees with leading universities worldwide
- Designed for students with Bachelor degrees (or equivalent) in any field of study
- One-year pre-master option for students without a Bachelor degree (having previously completed at least two years of university education) in preparation for the Master programme

SUCCESSFUL INTERNATIONAL CAREERS



The MIM program gave me all the soft and hard skills I needed to succeed at the end of my studies: get 3 degrees, experience 3 internships, be fluent in 4 languages and build a strong network.



Flavio Nappi, Class of 2010
President, ExtraVerso



I wanted my career to be in finance, so I chose several finance courses, but I knew that the best road to jobs in finance was through auditing. This is why I followed the Financial reporting and audit specialisation. I am now the CFO of a business unit of Valeo covering Japan, Thailand, Korea, Indonesia and India.

Benoit Leclercq, Class of 1997
CFO, Valeo Niles, Tokyo

SPECIALISING WITHIN A GENERAL MANAGEMENT PROGRAMME

**1ST YEAR:
acquire general
management
knowledge**

Prerequisites	Advanced core courses
<ul style="list-style-type: none"> • Accounting • Corporate Law I • Costs and Decisions • Economics I • Finance • Information Tools and Skills • Marketing • Psychology and Management • Quantitative Methods 	<ul style="list-style-type: none"> • Corporate Finance • Corporate Law II • Economics II • Financial Reporting under IFRS • Human Resource Management • International Marketing Decisions • Management Control • Operations Management • Organisation and Management • Strategy

**2ND YEAR:
specialise in one
of several areas**

• International business 1	BERLIN German
• International business 2	BERLIN German
• Sustainability	BERLIN German
<hr/>		
• Business consulting	LONDON English
• Creativity marketing management	LONDON English
<hr/>		
• Direccion internacional de proyectos 1	MADRID Spanish
• Direccion internacional de proyectos 2	MADRID Spanish
• Marketing and digital strategy	MADRID English
• Communication and new media	MADRID Spanish
• Societal entrepreneurship	MADRID English
<hr/>		
• Droit et finance	PARIS French
• Economie	PARIS French
• Entrepreneuriat	PARIS French
• Finance	PARIS English
• Finance (240h)	PARIS French
• Finance d'entreprise	PARIS French
• Finance de marché	PARIS French
• Ressources humaines	PARIS French
• Information financière et audit (IFA)	PARIS French
• Innovation	PARIS French
• International business development	PARIS English
• International consulting career	PARIS English
• Management de l'édition	PARIS French
• Management des ind. cult. et médiatiques	PARIS French
• Marketing manager	PARIS English
• Performance management systems	PARIS English
• Public management	PARIS English
• Research in management	PARIS English
• Stratégie et conseil	PARIS French
• Supply chain et achats	PARIS French

(NB: The portfolio of courses and specialisations is subject to change. Please check our website for more information.)

STUDY LOCATION AND LANGUAGE OPTIONS

5

Year 1

Year 2

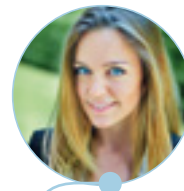
Semester 1		Semester 2		Summer Break	Semester 3		Semester 4		
Berlin (English) Madrid (Spanish or English) London (English) Paris (French or English) Turin (English)	EXAMS	Berlin (English) Madrid (Spanish or English) London (English) Paris (French or English) Turin (English)	EXAMS	Internship	Berlin (German) Madrid (Spanish or English) Paris (French or English) Partner university (English)	EXAMS	Berlin (German) London (English) Madrid (Spanish or English) Paris (French or English) Partner university (English)	EXAMS	Internship / full employment



I followed the Master in Management Programme on the Paris, London and Berlin campuses. Initially, I wanted a double degree between Germany and France, but when I found out there was such a thing as a triple degree, I went for it. So as I had to move from one country to another, I also found internships in every country.

Nadine Ulrich, Class of 2007
Head of the Department for Construction, Energy and Environment
German Chamber of Commerce, Shanghai

With my 3 years' academic career at ESCP Europe, on 3 different campuses and earning degrees that are recognized in Italy, France and Germany, I feel my experience has opened job possibilities that I could have never reached otherwise. When you enter the job market, it is not just about the company you work with, the position held and the salary, it is also about the higher level of responsibility and consideration that you are given compared to other juniors. ESCP Europe gives you the skills and attitude to be successful in this.



Luisa Corinne Scucchia, Class of 2015

ADMISSIONS

FOR THE TWO-YEAR MASTER PROGRAMME

The application process for the 2-year Master in Management programme is determined by where you earned your Bachelor degree. For full details of each process, refer to our website. If you earned your Licence in France, please see the French version of this brochure.

Previous studies in Europe (except France)

You have the choice between the European Masters Admission Test and the International Admission Test.

European Master Admission Test

Testing and interviews take place on ESCP Europe campuses

- STEP 1**
- Online application:
 - University transcripts
 - Degree certificate or diploma (if available)
 - CV
 - Language test (if required)

Previous studies outside of Europe

Global Admission Test

Interviews are carried out by Skype

- STEP 1**
- Online application:
 - GMAT, GRE, CAT or TAGE-MAGE
 - TOEFL, TOEIC, IELTS or Cambridge (if required)
 - University transcripts
 - Degree certificate/diploma (if available)
 - Personal statement
 - CV

International Admission Test

Interviews take place in over 60 testing centers around the world

- STEP 1**
- Online application:
 - GMAT, GRE, CAT or TAGE-MAGE
 - TOEFL, TOEIC, IELTS or Cambridge Exam (if required)
 - University transcripts
 - Degree certificate or diploma (if available)
 - Two academic references
 - CV

For selected candidates

- STEP 2**
- Verbal and mathematical aptitude test (SHL)
 - Language test(s)
 - Personal interview
 - Group interview

- STEP 2**
- Motivational interview by Skype

- STEP 2**
- Motivational Interview in person

Applications open
November 2015 - June 2016

Applications open
February 2016 - April 2016

Applications open
July 2015 - April 2016

FOR THE PRE-MASTER PROGRAMME

Students having completed at least two years of university studies or the French *classes préparatoires* may apply for a pre-master year. Subsequent applications to the Master studies are not required.

CLASSES PRÉPARATOIRES

See the brochure Master in Management Grande Ecole, Année pré master.

Pre-Master Admission Test

Testing and interviews take place on the Turin campus

- STEP 1**
- Online application:
 - University transcripts
 - Degree certificate or diploma (if available)
 - CV

- STEP 2**
- Verbal and mathematical aptitude test (SHL)
 - 2 language tests in German, English, Spanish, French or Italian
 - Personal interview

Applications open March - May 2016

COSTS AND FINANCING

2016 Tuition fees

- Master Year 1: €13,800 for EU students / €17,900 for non-EU students.
- Master Year 2: €13,800 for EU students / €17,900 for non-EU students.
- Pre-Master Year: €13,800 (all students, EU and non-EU).
- Gap year: annual registration fee of €770.

A supplement of €1,000 to €1,940 for a catch-up semester will be due for those students without previous management studies.

Tuition fees may be subject to change. Please check our website for up-to-date information.

Scholarships

ESCP Europe strives to attract the best students, regardless of their financial background. As such, the School offers a selection of need and merit-based scholarships. Around 400 are awarded every year, representing a total of €2,200,000.

- ESCP Europe scholarships finance 25%, 50% or 100% of the pre-master and Master Year 1 tuition fees (reserved for EU students). Awards are made based on financial need. French students should apply for Higher Education Grants awarded by the CROUS.
- Non EU applicants may be awarded scholarships based on merit.
- Some countries provide scholarships for their own citizens. Please obtain information in your home country by contacting the relevant government bodies and foundations.

ADMISSION CONTACTS

EUROPEAN MASTER ADMISSION TEST

Paris • Fabien Tyrlier • mim-info@escpeurope.eu • +33 1 49 23 27 77

London • Patrick Sales • mimlondon@escpeurope.eu • +44 20 7443 8843

Berlin • Veronika Thiel • mim@escpeurope.eu • +49 30 32 007 209

Madrid • Alejandro Rubio • arubio@escpeurope.eu • +34 91 386 25 11

Turin • Silvia Tomatis • infomim.it@escpeurope.eu • +39 011 670 58 92

GLOBAL ADMISSION TEST AND INTERNATIONAL ADMISSION TEST

Nathalie Quintin • mim-info@escpeurope.eu • +33 1 49 23 21 45

PRE-MASTER ADMISSION TEST

Turin • Silvia Tomatis • infomim.it@escpeurope.eu • +39 011 670 58 92

MASTER IN MANAGEMENT

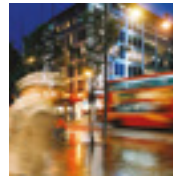
BERLIN

Heubnerweg 8 – 10
14059 Berlin, Deutschland
T: + 49 30 32007 0



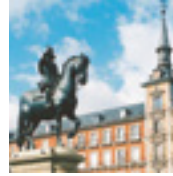
LONDON

527 Finchley Road
London NW3 7BG, United Kingdom
T: + 44 20 7443 8800



MADRID

Arroyofresno 1
28 035 Madrid, España
T: + 34 91 386 25 11



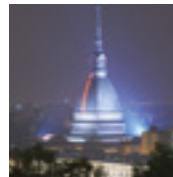
PARIS

79, av. de la République
75543 Paris Cedex 11, France
T: + 33 1 49 23 20 00



TURIN

Corso Unione Sovietica, 218 bis
10134 Torino, Italia
T: + 39 011 670 58 94



WARSAW

c/o Kozminski University
International Relation Office
57/59 Jagiellońska St.,
03-301 Warsaw, Poland
T: + 48 22 519 22 89



CCI Paris Ile-de-France/CICERO/PAO Les Bluets 8064-2016 - Photos: Dehellefontaine - Juices Images / Photononstop - PhotoDisc - Gaelik Razimbaud - Stéphane Grangier - L. Bonwillain/R. Roux/CCIP - Jérôme Arovas - Vincent Blocquaux